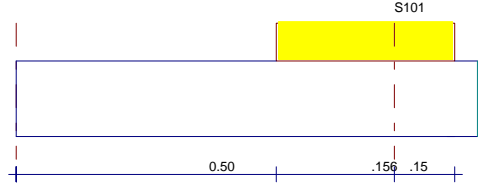


TEMEL BETONARME HESAP SONUÇLARI

T1 MUTEMADI TEMELI (-S101)

I=0 J=1 B/D=60/80 HATIL B/D=25/70 AMPATMAN Bo/Do=100/20 Ko= 3000 t/m³ Gzem= 18 t/m² Qg=0.0t/m

KOMBİNASYON	SolM (tm)	SağM (tm)	SolT (t)	SağT (t)
1. (G+G+G+G)	0.00	0.64	0.00	2.57
2. (Q+Q+Q+Q)	0.00	0.11	0.00	0.44
3. (o+Q+o+Q)	0.00	0.07	0.00	0.28
4. (Q+o+Q+o)	0.00	0.04	0.00	0.16
5. (Q+Q+o+Q)	0.00	0.07	0.00	0.29
6. (o+Q+Q+o)	0.00	0.07	0.00	0.29
7. (o+o+Q+Q)	0.00	0.07	0.00	0.30
Zemin itkisi	0.00	0.00	0.00	0.00
X-Deprem+5	0.00	-0.20	0.00	-0.78
X-Deprem-5	0.00	-0.18	0.00	-0.71
Y-Deprem+5	0.00	-0.28	0.00	-1.12
Y-Deprem-5	0.00	-0.31	0.00	-1.23
X-Rüzgar+5	0.00	0.00	0.00	0.00
X-Rüzgar-5	0.00	0.00	0.00	0.00
Y-Rüzgar+5	0.00	0.00	0.00	0.00
Y-Rüzgar-5	0.00	0.00	0.00	0.00
C30 S420			Fk: 0.78	0.30 cm ²



ZEMİN GERİLMESİ

Gzg = 11.518 ± 0.142

Gzp = 1.509 ± 0.027

Gzd = 4.146 ± 0.602

Gzw = 0.000 ± 0.000

Gmax= 13.20 < 18.00 t/m²

Gzg = 11.518 ± 0.142

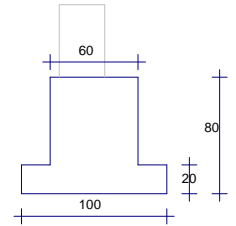
Gzp = 1.509 ± 0.027

Gzd = 4.146 ± 0.602

Gzw = 0.000 ± 0.000

BETONARME SONUÇLAR :	altMsol	üstMsol	Maç.	altMsağ	üstMsağ	ampatman
Mdüz. (tm)	: 0.00	0.00	(0.00m)	0.35	0.00	
max M (tm)	: 0.00	0.00	0.00	1.07	0.00	0.00
fcd (kg/cm ²)	: 0.00	0.00	0.00	0.00	0.00	200.00
As' (cm ²)	: 0.00	0.00	0.00	0.00	0.00	
As (cm ²)	: 0.00	0.00	0.00	0.00	0.00	5.00

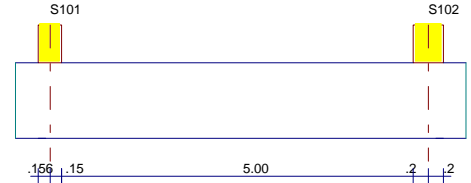
DONATI : 4ø12 (mon.) + 6ø10 (göv.) + 2ø20 (sağ alt ila.) + ø12/20 amp.
4ø14 (düz) + 3ø20 (sağ üst ila.) + 2ø8/20 (etriye)



T1 MUTEMADI TEMELI (S101-S102)

I=1 J=2 B/D=60/80 HATIL B/D=25/70 AMPATMAN Bo/Do=100/20 Ko= 3000 t/m³ Gzem= 18 t/m² Qg=0.0t/m

KOMBİNASYON	SolM (tm)	SağM (tm)	SolT (t)	SağT (t)
1. (G+G+G+G)	-0.34	44.94	-14.78	33.44
2. (Q+Q+Q+Q)	-0.06	7.87	-2.10	5.34
3. (o+Q+o+Q)	0.13	3.70	-1.41	2.89
4. (Q+o+Q+o)	-0.19	4.07	-0.66	2.36
5. (Q+Q+o+Q)	-0.21	5.61	-1.35	3.60
6. (o+Q+Q+o)	0.18	4.80	-1.37	3.44
7. (o+o+Q+Q)	-0.09	5.12	-1.43	3.47
Zemin itkisi	0.00	0.00	0.00	0.00
X-Deprem+5	-21.25	6.73	0.90	-5.04
X-Deprem-5	-22.91	7.94	0.28	-4.68
Y-Deprem+5	2.49	-0.34	9.15	-8.26
Y-Deprem-5	4.91	-2.07	10.05	-8.77
X-Rüzgar+5	0.00	0.00	0.00	0.00
X-Rüzgar-5	0.00	0.00	0.00	0.00
Y-Rüzgar+5	0.00	0.00	0.00	0.00
Y-Rüzgar-5	0.00	0.00	0.00	0.00
C30 S420			Fk: 4.13	14.11 cm ²



ZEMİN GERİLMESİ

Gzg = 11.518 ± 0.142

Gzp = 1.509 ± 0.027

Gzd = 4.146 ± 0.602

Gzw = 0.000 ± 0.000

Gmax= 14.24 < 18.00 t/m²

Gzg = 12.487 ± 0.084

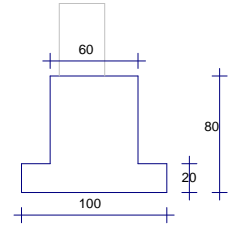
Gzp = 1.651 ± 0.022

Gzd = 3.965 ± 2.632

Gzw = 0.000 ± 0.000

BETONARME SONUÇLAR :	altMsol	üstMsol	Maç.	altMsağ	üstMsağ	ampatman
Mdüz. (tm)	: -1.03	-1.49	(1.60m)	5.62	0.00	
max M (tm)	: -23.45	22.75	18.68	75.51	0.00	0.26
fcd (kg/cm ²)	: 200.00	200.00	200.00	200.00	0.00	200.00
As' (cm ²)	: 0.00	0.00	0.00	0.00	0.00	
As (cm ²)	: 15.32	15.32	12.25	15.32	0.00	5.00

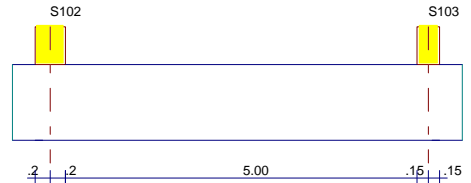
DONATI : 4ø12 (mon.) + 6ø10 (göv.) + ø12/20 amp.
4ø14 (düz) + 4ø14 (pilye) + 2ø8/20/10 (etriye)



T1 MUTEMADI TEMELI (S102-S103)

I=2 J=3 B/D=60/80 HATIL B/D=25/70 AMPATMAN Bo/Do=100/20 Ko= 3000 t/m³ Gzem= 18 t/m² Qg=0.0t/m

KOMBİNASYON	SolM (tm)	SağM (tm)	SolT (t)	SağT (t)
1. (G+G+G+G)	-45.51	35.97	-28.76	24.32
2. (Q+Q+Q+Q)	-7.94	5.96	-4.42	3.46
3. (o+Q+o+Q)	-4.05	2.06	-2.47	1.50
4. (Q+o+Q+o)	-3.79	3.78	-1.85	1.83
5. (Q+Q+o+Q)	-5.44	3.65	-3.04	2.20
6. (o+Q+Q+o)	-5.14	3.99	-2.87	2.32
7. (o+o+Q+Q)	-5.10	4.03	-2.73	2.14
Zemin itkisi	0.00	0.00	0.00	0.00
X-Deprem+5	-19.08	-17.66	-7.34	-6.59
X-Deprem-5	-22.22	-19.01	-8.43	-7.50
Y-Deprem+5	1.06	0.81	10.15	-10.03
Y-Deprem-5	5.62	2.78	11.73	-8.70
X-Rüzgar+5	0.00	0.00	0.00	0.00
X-Rüzgar-5	0.00	0.00	0.00	0.00
Y-Rüzgar+5	0.00	0.00	0.00	0.00
Y-Rüzgar-5	0.00	0.00	0.00	0.00
C30 S420			Fk: 7.91	6.72 cm ²



ZEMİN GERİLMESİ

Gzg = 12.487 ± 0.084

Gzp = 1.651 ± 0.022

Gzd = 3.965 ± 2.632

Gzw = 0.000 ± 0.000

Gmax= 14.24 < 18.00 t/m²

Gzg = 11.752 ± 0.027

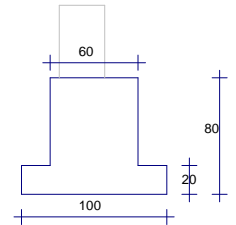
Gzp = 1.445 ± 0.015

Gzd = 4.509 ± 2.019

Gzw = 0.000 ± 0.000

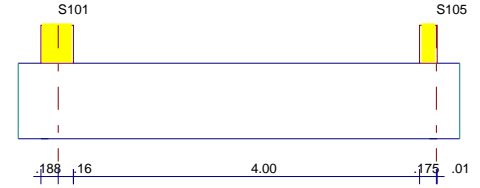
BETONARME SONUÇLAR :	altMsol	üstMsol	Maç.	altMsağ	üstMsağ	ampatman
Mdüz. (tm)	: -4.65	0.00	(2.66m)	2.07	0.00	
max M (tm)	: -76.42	0.00	-13.52	60.93	0.00	0.28
fcd (kg/cm ²)	: 200.00	0.00	0.00	200.00	0.00	200.00
As' (cm ²)	: 0.00	0.00	0.00	0.00	0.00	
As (cm ²)	: 15.32	0.00	12.25	15.32	0.00	5.00

DONATI : 4ø12 (mon.) + 6ø10 (göv.) + ø12/20 amp.
4ø14 (düz) + 4ø14 (pilye) + 2ø8/20/10 (etriye)



T2 MUTEMADI TEMELI (S101-S105)I=1 J=5 B/D=60/80 HATIL B/D=25/70 AMPATMAN Bc/Do=100/20 Ko= 3000 t/m³ Gzem= 18 t/m² Qg=0.0t/m**KOMBINASYON SolM (tm) SağM (tm) SolT (t) SağT (t)**

1. (G+G+G+G)	-1.57	23.84	-11.34	22.05
2. (Q+Q+Q+Q)	-0.20	3.52	-1.77	3.34
3. (o+Q+o+Q)	-0.22	1.51	-1.26	1.78
4. (Q+o+Q+o)	0.00	1.92	-0.51	1.49
5. (Q+Q+o+Q)	-0.13	2.04	-1.22	2.09
6. (o+Q+Q+o)	-0.17	2.21	-1.17	2.13
7. (o+o+Q+Q)	-0.15	2.61	-1.15	2.34
Zemin itkisi	0.00	0.00	0.00	0.00
X-Deprem+%5	0.83	-6.13	3.31	-6.15
X-Deprem-%5	2.83	-6.88	3.33	-5.67
Y-Deprem+%5	-33.61	10.00	-1.42	-8.60
Y-Deprem-%5	-36.54	11.08	-1.47	-9.30
X-Rüzgar+%5	0.00	0.00	0.00	0.00
X-Rüzgar-%5	0.00	0.00	0.00	0.00
Y-Rüzgar+%5	0.00	0.00	0.00	0.00
Y-Rüzgar-%5	0.00	0.00	0.00	0.00
C30 S420		Fk: 3.39	8.15	cm ²

**ZEMİN GERİLMESİ**

Gzg = 11.518 ± 0.070

Gzp = 1.509 ± 0.012

Gzd = 4.146 ± 0.040

Gzw = 0.000 ± 0.000

Gmax= 13.11 < 18.00 t/m²

Gzg = 10.469 ± 0.059

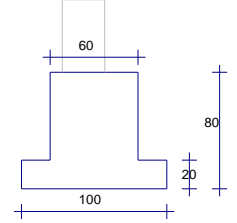
Gzp = 1.313 ± 0.010

Gzd = 2.707 ± 1.302

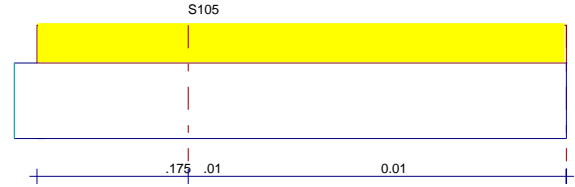
Gzw = 0.000 ± 0.000

BETONARME SONUÇLAR : altMsol üstMsol Maç. altMsağ üstMsağ ampatlan

Mdüz. (tm)	: -0.54	-1.42	(1.26m)	1.69	0.00	
max M (tm)	: -38.34	35.13	9.30	39.01	0.00	0.26
fcd (kg/cm ²)	: 200.00	200.00	200.00	200.00	0.00	200.00
As' (cm ²)	: 0.00	0.00	0.00	0.00	0.00	0.00
As (cm ²)	: 15.32	15.32	12.25	15.32	0.00	5.00

DONATI : 4ø12 (mon.) + 6ø10 (göv.) + 2ø20 (sağ alt ila.) + ø12/20 amp.
4ø14 (düz) + 4ø14 (pilye) + 2ø8/10 (etriye)**T2 MUTEMADI TEMELI (S105-)**I=5 J=0 B/D=60/80 HATIL B/D=25/70 AMPATMAN Bc/Do=100/20 Ko= 3000 t/m³ Gzem= 18 t/m² Qg=0.0t/m**KOMBINASYON SolM (tm) SağM (tm) SolT (t) SağT (t)**

1. (G+G+G+G)	-0.04	0.00	-0.82	0.00
2. (Q+Q+Q+Q)	-0.01	0.00	-0.12	0.00
3. (o+Q+o+Q)	0.00	0.00	-0.07	0.00
4. (Q+o+Q+o)	0.00	0.00	-0.05	0.00
5. (Q+Q+o+Q)	0.00	0.00	-0.08	0.00
6. (o+Q+Q+o)	0.00	0.00	-0.08	0.00
7. (o+o+Q+Q)	0.00	0.00	-0.08	0.00
Zemin itkisi	0.00	0.00	0.00	0.00
X-Deprem+%5	0.01	0.00	0.25	0.00
X-Deprem-%5	0.01	0.00	0.25	0.00
Y-Deprem+%5	0.00	0.00	0.04	0.00
Y-Deprem-%5	0.00	0.00	0.04	0.00
X-Rüzgar+%5	0.00	0.00	0.00	0.00
X-Rüzgar-%5	0.00	0.00	0.00	0.00
Y-Rüzgar+%5	0.00	0.00	0.00	0.00
Y-Rüzgar-%5	0.00	0.00	0.00	0.00
C30 S420		Fk: 0.00	0.00	cm ²

**ZEMİN GERİLMESİ**

Gzg = 10.469 ± 0.059

Gzp = 1.313 ± 0.010

Gzd = 2.707 ± 1.302

Gzw = 0.000 ± 0.000

Gmax= 13.11 < 18.00 t/m²

Gzg = 10.469 ± 0.059

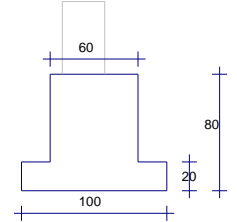
Gzp = 1.313 ± 0.010

Gzd = 2.707 ± 1.302

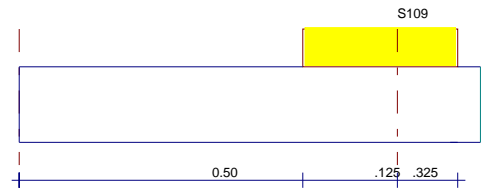
Gzw = 0.000 ± 0.000

BETONARME SONUÇLAR : altMsol üstMsol Maç. altMsağ üstMsağ ampatlan

Mdüz. (tm)	: -0.05	0.00	(0.00m)	0.00	0.00	
max M (tm)	: -0.06	0.00	0.00	0.00	0.00	0.26
fcd (kg/cm ²)	: 0.00	0.00	0.00	0.00	0.00	200.00
As' (cm ²)	: 0.00	0.00	0.00	0.00	0.00	0.00
As (cm ²)	: 0.00	0.00	0.00	0.00	0.00	5.00

DONATI : 4ø12 (mon.) + ø12/20 amp.
+ 2ø8/20 (etriye)**T3 MUTEMADI TEMELI (-S109)**I=0 J=9 B/D=60/80 HATIL B/D=25/70 AMPATMAN Bc/Do=100/20 Ko= 3000 t/m³ Gzem= 18 t/m² Qg=0.0t/m**KOMBINASYON SolM (tm) SağM (tm) SolT (t) SağT (t)**

1. (G+G+G+G)	0.00	0.76	0.00	2.54
2. (Q+Q+Q+Q)	0.00	0.12	0.00	0.40
3. (o+Q+o+Q)	0.00	0.05	0.00	0.18
4. (Q+o+Q+o)	0.00	0.06	0.00	0.21
5. (Q+Q+o+Q)	0.00	0.07	0.00	0.24
6. (o+Q+Q+o)	0.00	0.08	0.00	0.26
7. (o+o+Q+Q)	0.00	0.08	0.00	0.28
Zemin itkisi	0.00	0.00	0.00	0.00
X-Deprem+%5	0.00	-0.40	0.00	-1.31
X-Deprem-%5	0.00	-0.43	0.00	-1.39
Y-Deprem+%5	0.00	0.36	0.00	1.18
Y-Deprem-%5	0.00	0.39	0.00	1.30
X-Rüzgar+%5	0.00	0.00	0.00	0.00
X-Rüzgar-%5	0.00	0.00	0.00	0.00
Y-Rüzgar+%5	0.00	0.00	0.00	0.00
Y-Rüzgar-%5	0.00	0.00	0.00	0.00
C30 S420		Fk: 0.94	0.24	cm ²

**ZEMİN GERİLMESİ**

Gzg = 8.952 ± 0.081

Gzp = 1.034 ± 0.017

Gzd = 3.146 ± 0.422

Gzw = 0.000 ± 0.000

Gmax= 10.08 < 18.00 t/m²

Gzg = 8.952 ± 0.081

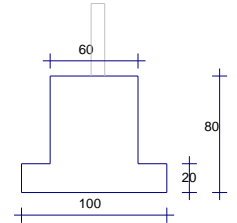
Gzp = 1.034 ± 0.017

Gzd = 3.146 ± 0.422

Gzw = 0.000 ± 0.000

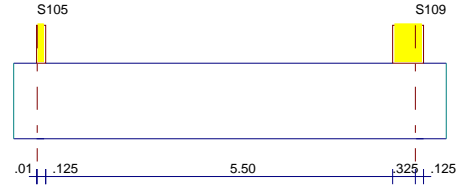
BETONARME SONUÇLAR : altMsol üstMsol Maç. altMsağ üstMsağ ampatlan

Mdüz. (tm)	: 0.00	0.00	(0.00m)	0.28	0.00	
max M (tm)	: 0.00	0.00	0.00	1.30	0.00	0.00
fcd (kg/cm ²)	: 0.00	0.00	0.00	200.00	0.00	200.00
As' (cm ²)	: 0.00	0.00	0.00	0.00	0.00	0.00
As (cm ²)	: 0.00	0.00	0.00	15.32	0.00	5.00

DONATI : 4ø12 (mon.) + 6ø10 (göv.) + 2ø20 (sağ alt ila.) + ø12/20 amp.
4ø14 (düz) + 3ø20 (sağ üst ila.) + 2ø8/20 (etriye)

T7 MÜTEMADI TEMELİ (S105-S109)I=5 J=9 B/D=60/80 HATIL B/D=25/70 AMPATMAN Bc/Do=100/20 Ko= 3000 t/m³ Gzem= 18 t/m² Qg=0.0t/m**KOMBİNASYON SolM (tm) SağM (tm) SolT (t) SağT (t)**

1. (G+G+G+G)	-22.70	-0.19	-24.77	14.89
2. (Q+Q+Q+Q)	-3.36	0.03	-3.66	2.18
3. (o+Q+o+Q)	-1.56	0.04	-1.87	1.06
4. (Q+o+Q+o)	-1.72	-0.03	-1.71	1.04
5. (Q+Q+o+Q)	-1.87	-0.08	-2.24	1.31
6. (o+Q+Q+o)	-2.26	0.11	-2.36	1.40
7. (o+o+Q+Q)	-2.42	-0.01	-2.55	1.49
Zemin itkisi	0.00	0.00	0.00	0.00
X-Deprem+%5	6.74	0.04	8.34	-6.11
X-Deprem-%5	9.18	2.77	9.44	-5.43
Y-Deprem+%5	-21.06	-23.97	-9.99	-4.16
Y-Deprem-%5	-24.62	-27.97	-11.58	-5.15
X-Rüzgar+%5	0.00	0.00	0.00	0.00
X-Rüzgar-%5	0.00	0.00	0.00	0.00
Y-Rüzgar+%5	0.00	0.00	0.00	0.00
Y-Rüzgar-%5	0.00	0.00	0.00	0.00

**ZEMİN GERİLMESİ**

Gzg = 10.469 ± 0.059

Gzp = 1.313 ± 0.010

Gzd = 2.707 ± 1.302

Gzw = 0.000 ± 0.000

Gmax= 11.85 < 18.00 t/m²

Gzg = 8.952 ± 0.153

Gzp = 1.034 ± 0.030

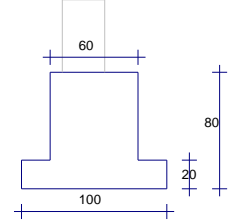
Gzd = 3.294 ± 0.356

Gzw = 0.000 ± 0.000

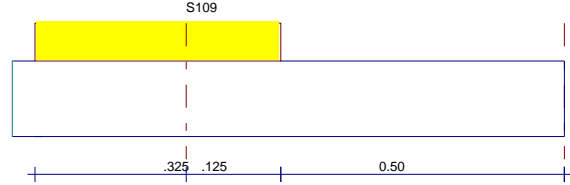
C30 S420

Fk: 10.68 5.21 cm²

BETONARME SONUÇLAR :	altMsol	üstMsol	Maç.	altMsağ	üstMsağ	ampatman
Mdüz. (tm)	-0.93	-0.77	(3.14m)	-2.04	-1.90	
max M (tm)	-50.68	4.20	26.47	27.88	-28.24	0.24
fcd (kg/cm ²)	200.00	200.00	200.00	200.00	0.00	200.00
As' (cm ²)	0.00	0.00	0.00	0.00	0.00	0.00
As (cm ²)	15.32	15.32	12.25	15.32	0.00	5.00

DONATI : 4ø12 (mon.) + 6ø10 (göv.) + 2ø20 (sağ alt ila.) + ø12/20 amp.
4ø14 (düz) + 4ø14 (pilye) + 2ø8/20/10 (etriye)**T7 MÜTEMADI TEMELİ (S109-)**I=9 J=0 B/D=60/80 HATIL B/D=25/70 AMPATMAN Bc/Do=100/20 Ko= 3000 t/m³ Gzem= 18 t/m² Qg=0.0t/m**KOMBİNASYON SolM (tm) SağM (tm) SolT (t) SağT (t)**

1. (G+G+G+G)	-0.78	0.00	-2.60	0.00
2. (Q+Q+Q+Q)	-0.12	0.00	-0.41	0.00
3. (o+Q+o+Q)	-0.05	0.00	-0.17	0.00
4. (Q+o+Q+o)	-0.07	0.00	-0.22	0.00
5. (Q+Q+o+Q)	-0.07	0.00	-0.24	0.00
6. (o+Q+Q+o)	-0.08	0.00	-0.26	0.00
7. (o+o+Q+Q)	-0.09	0.00	-0.29	0.00
Zemin itkisi	0.00	0.00	0.00	0.00
X-Deprem+%5	0.38	0.00	1.26	0.00
X-Deprem-%5	0.41	0.00	1.35	0.00
Y-Deprem+%5	-0.38	0.00	-1.25	0.00
Y-Deprem-%5	-0.42	0.00	-1.37	0.00
X-Rüzgar+%5	0.00	0.00	0.00	0.00
X-Rüzgar-%5	0.00	0.00	0.00	0.00
Y-Rüzgar+%5	0.00	0.00	0.00	0.00
Y-Rüzgar-%5	0.00	0.00	0.00	0.00

**ZEMİN GERİLMESİ**

Gzg = 8.952 ± 0.153

Gzp = 1.034 ± 0.030

Gzd = 3.294 ± 0.356

Gzw = 0.000 ± 0.000

Gmax= 11.85 < 18.00 t/m²

Gzg = 8.952 ± 0.153

Gzp = 1.034 ± 0.030

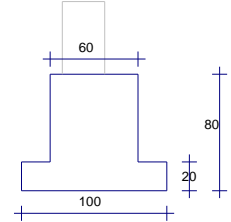
Gzd = 3.294 ± 0.356

Gzw = 0.000 ± 0.000

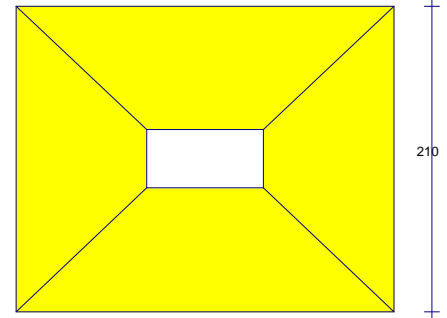
C30 S420

Fk: 0.24 0.94 cm²

BETONARME SONUÇLAR :	altMsol	üstMsol	Maç.	altMsağ	üstMsağ	ampatman
Mdüz. (tm)	-0.23	0.00	(0.00m)	0.00	0.00	
max M (tm)	-1.32	0.00	0.00	0.00	0.00	0.24
fcd (kg/cm ²)	200.00	0.00	0.00	200.00	200.00	200.00
As' (cm ²)	0.00	0.00	0.00	0.00	0.00	0.00
As (cm ²)	15.32	0.00	0.00	7.50	5.06	5.00

DONATI : 4ø12 (mon.) + 6ø10 (göv.) + ø12/20 amp.
4ø14 (düz) + 2ø8/20 (etriye)**T5 TEKİL TEMELİ**Bx= 260 cm By= 210 cm D= 50 cm I= 6 Ko= 3000 t/m³ Gzem= 18 t/m²**KOMBİNASYON Mx (tm) My (tm)**

1. (G+G+G+G)	-0.47	0.41	Vpr = 204.285 (t) > Vpd = 108.094 (t)
2. (Q+Q+Q+Q)	-0.07	0.06	
3. (o+Q+o+Q)	-0.35	-0.05	
4. (Q+o+Q+o)	0.28	0.11	Gzx = 21.098 t/m ²
5. (Q+Q+o+Q)	0.14	0.08	Gzy = 16.543 t/m ²
6. (o+Q+Q+o)	-0.34	-0.04	
7. (o+o+Q+Q)	0.06	0.07	
Zemin itkisi	0.00	0.00	
X-Deprem+%5	-26.68	0.22	
X-Deprem-%5	-27.69	0.76	
Y-Deprem+%5	0.58	-8.56	
Y-Deprem-%5	2.07	-9.34	
X-Rüzgar+%5	0.00	0.00	
X-Rüzgar-%5	0.00	0.00	
Y-Rüzgar+%5	0.00	0.00	
Y-Rüzgar-%5	0.00	0.00	

**BETONARME SONUÇLAR x yönü y yönü**

M max (tm)	28.51	9.85
M amp. (tm)	25.28/by	24.79/bx
fcd (kg/cm ²)	200.00	200.00
As' (cm ²)	0.00	0.00
As (cm ²)	21.34	25.94

DONATI : 11ø20/20 (X yönü.) + 14ø20/20 (Y yönü.)

